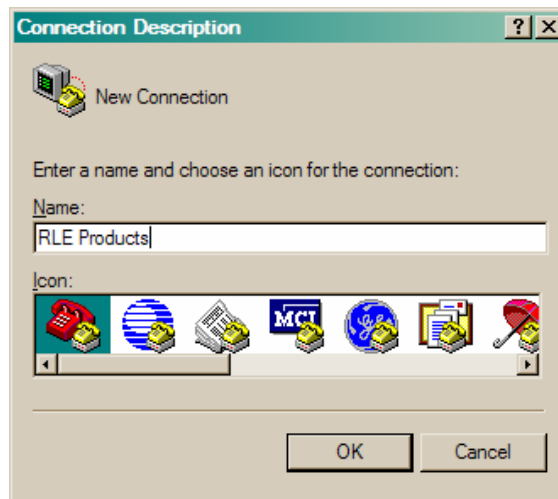


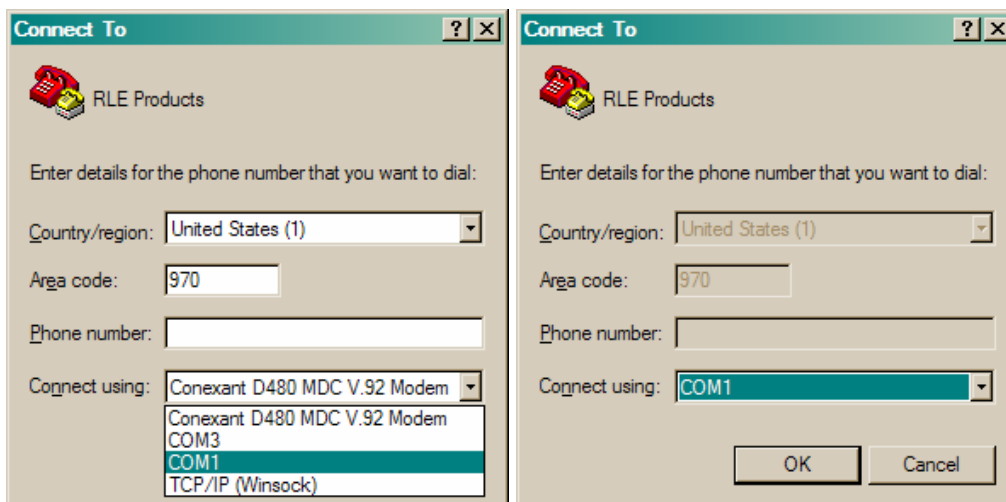
## HOW TO CONNECT HYPERTERMINAL TO RLE PRODUCTS

**MODELS: FMS-X/FMS-XXXX Series, F3400, F1000, LD5100, LD2000, and LDRA6**

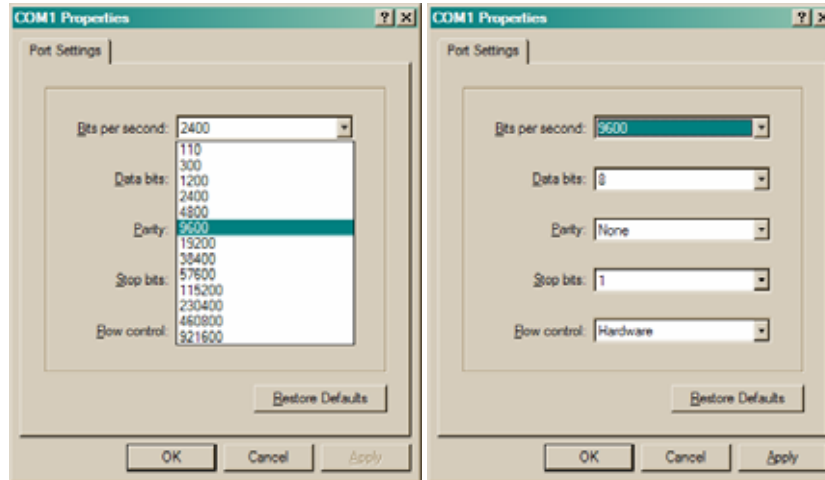
1. Connect the PC communications port to the RLE product using a standard RS-232 cable. The Falcon products (FMS, F3400, F1000) are shipped with a RS-232 cable.
2. Turn on or verify that the RLE equipment is powered up.
3. From Windows Start HyperTerminal:  
**Start -> Programs -> Accessories -> Communications-> HyperTerminal**
4. Enter a name for the link, such as "RLE Products", "RLE FMS", "RLE LD2000", etc.



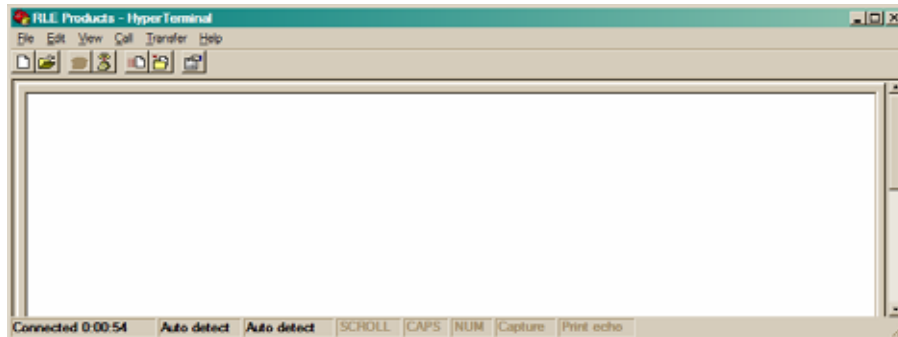
5. From the "Connect Using" drop down box, select the PC com port that is connected to the RLE product. Then click OK.



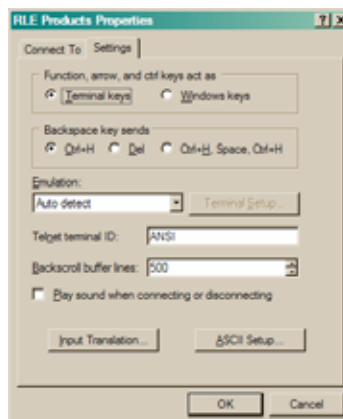
- From the “Com1 Properties” box, select the baud rate or “Bits per second” of 9600. Then click OK.



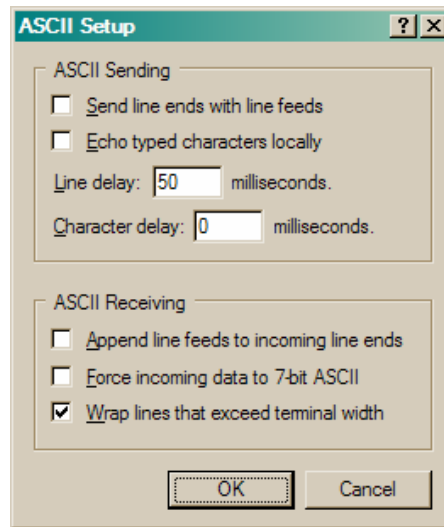
- A blank window will appear.



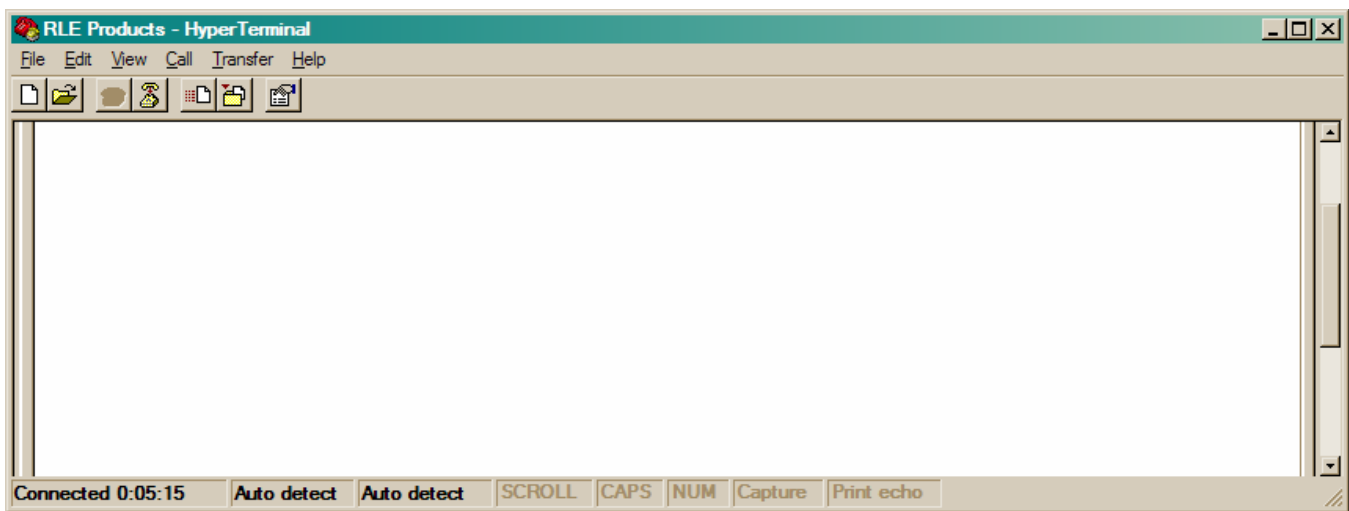
- Select File -> Properties, and then select the “Settings” tab.



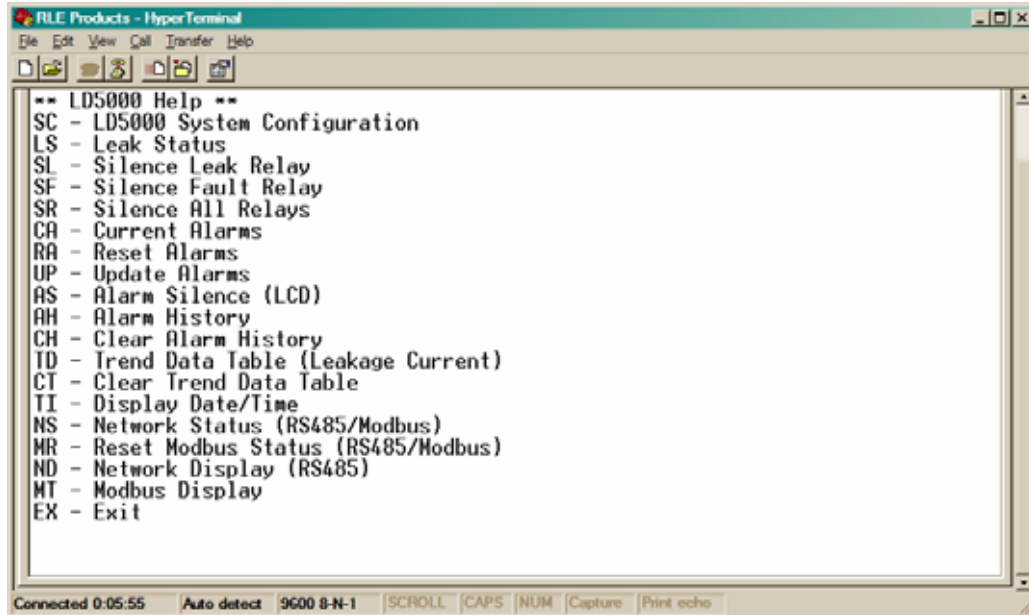
- Click the “ASCII Setup” button and set the “Line Delay” to 50 milliseconds. Then click OK to close the ASCII setup window. Close the Properties window by clicking on the next window.



- HyperTerminal now displays a blank window.



11. Press Enter and the Main Menu will appear.



```

RLE Products - HyperTerminal
File Edit View Call Transfer Help
** LD5000 Help **
SC - LD5000 System Configuration
LS - Leak Status
SL - Silence Leak Relay
SF - Silence Fault Relay
SR - Silence All Relays
CA - Current Alarms
RA - Reset Alarms
UP - Update Alarms
AS - Alarm Silence (LCD)
AH - Alarm History
CH - Clear Alarm History
TD - Trend Data Table (Leakage Current)
CT - Clear Trend Data Table
TI - Display Date/Time
NS - Network Status (RS485/Modbus)
MR - Reset Modbus Status (RS485/Modbus)
ND - Network Display (RS485)
MT - Modbus Display
EX - Exit
Connected 0:05:55 Auto detect 9600 8-N-1 SCROLL CAPS NUM Capture Print echo

```

12. Use the PC keypad to enter SC, LS, etc. followed by the Enter key to select additional menus.
13. Upon exiting HyperTerminal, it will ask if you want to save the "RLE Products" connection setup. RLE recommends saving the setup for future connection to RLE products.